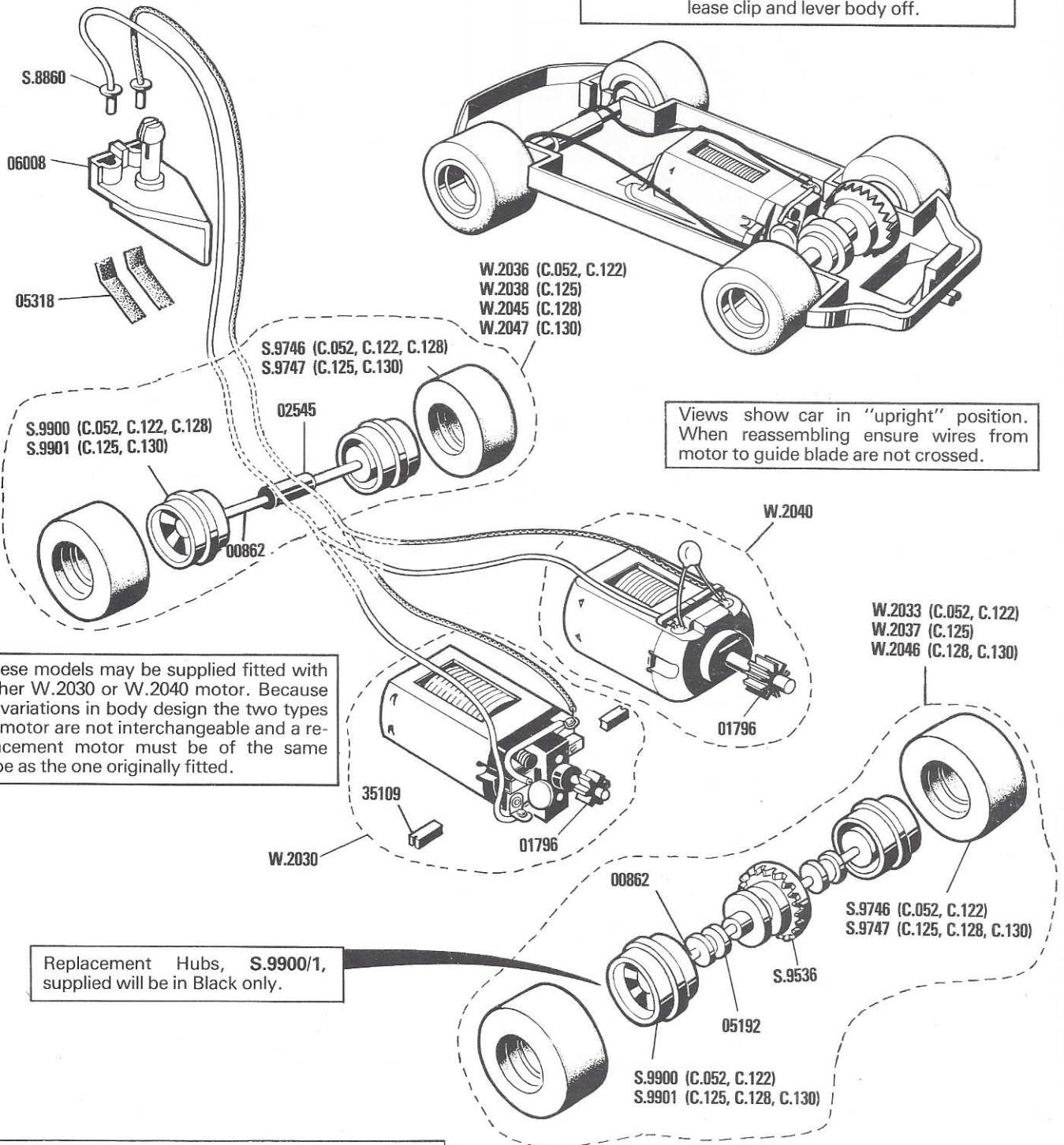


- C.052 Escort Mexico**
C.122 Mini Clubman
C.125 Porsche Turbo 935
C.128 BMW 3.0 CSL
C.130 Triumph TR7

As produced from 1977

To remove body from underpan	
C.052	Insert knife blade at rear end between underpan and body to release number plate and lever body off.
C.122 C.128	Insert knife blade at front end between underpan and body to release radiator grill and lever body off.
C.125	Insert knife blade at front end between underpan and body to release clips in bumper and lever body off.
C.130	Insert knife blade behind rear wheel between underpan and body to release clip and lever body off.



List of Parts

- C.052 Escort Mexico**
C.122 Mini Clubman
C.125 Porsche Turbo 935
C.128 BMW 3.0 CSL
C.130 Triumph TR7

As produced from 1977

Ref. No.	Item
W.2030	Motor/Wire Lead Assembly
W.2033	Axle Assembly—Rear (C.052, C.122)
W.2036	Axle Assembly—Front (C.052, C.122)
W.2037	Axle Assembly—Rear (C.125)
W.2038	Axle Assembly—Front (C.125)
W.2040	Motor/Wire Lead Assembly
W.2045	Axle Assembly—Front (C.128)
W.2046	Axle Assembly—Rear (C.128, C.130)
W.2047	Axle Assembly—Front (C.130)
S.8860	Eyelet
S.9746	Tyre—Front (C.052, C.122, C.128)
	—Rear (C.052, C.122)
S.9747	Tyre—Front (C.125, C.130)
	—Rear (C.125, C.128, C.130)
S.9900	Hub—Front (C.052, C.122, C.128)
	—Rear (C.052, C.122)
S.9901	Hub—Front (C.125, C.130)
	—Rear (C.125, C.128, C.130)
00862	Axle
01796	Motor Pinion
02545	Front Axle Spacer
05192	Rear Axle Bearing
05318	Pick-up Braid
06008	Guide Blade
35109	Carbon Brush
COMPLETE CAR BODIES (Not illustrated)	
Bodies are supplied complete with underpans, interior fittings, bumpers, etc.	
W.1052	For C.052 Escort
W.1122	For C.122 Mini Clubman * (Red or Yellow)
W.1125	For C.125 Porsche 935
W.1128	For C.128 BMW 3.0 CSL
W.1130	For C.130 Triumph TR7
* When ordering state colour required.	

Notes

ROVEX Service Centre

ALBERT STREET, RAMSGATE,
KENT, CT11 9HD, ENGLAND.